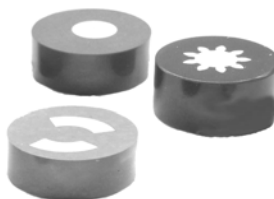


COMPRESSION MOLDING POWDERS

LUCITE THERMOPLASTIC

provides an economical transparent mount for specimens. Allows the operator to see areas of interest in the mount. Recommended molding pressure 3000 PSI / 300°F

Catalog #	Lucite	Qty	
M125	Transparent	5 Lbs.	
M125-4	Transparent	20 Lbs.(4/case)	
M125-25	Transparent	25 Lbs.	



PHENOLIC THERMOSETTING

These are the most popular and economical materials to use. Its fast, has a high shrinkage, low edge retention and low hardness. Recommended molding pressure 4200 PSI / 350°F

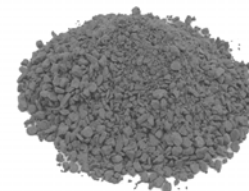
Catalog #	Phenolic Powder	Qty	
M126	Black	5 Lbs.	
M126-4	Black	20 Lbs.(4/case)	
M126-25	Black	25Lbs.	
M127	Red	5 Lbs.	
M127-4	Red	20 Lbs.(4/case)	
M127-25	Red	25 Lbs.	
M128	Green	5 Lbs.	
M128-4	Green	20 Lbs.(4/case)	
M128-25	Green	25 Lbs.	



DIALLYL PHTHALATE MINERAL FILLED

provides moderate shrinkage and chemical resistance. Recommended molding pressure 3000 PSI / 300°F

Catalog #	Diallyl Phthalate	Qty	
M130	Blue	5 Lbs.	
M130-4	Blue	20 Lbs.(4/case)	
M130-25	Blue	25 Lbs.	



DIALLYL PHTHALATE SHORT GLASS

used for a harder surface finish. Chemical resistant. Recommended molding pressure 3000 PSI / 300°F

Catalog #	Diallyl Phthalate	Qty	
M131	Blue	5 Lbs.	
M132	Green	5 Lbs.	

BLACK EPOXY THERMOSETTING

has superior edge retention, tough grinding and excellent flow characteristics. Recommended molding pressure 4200 PSI / 350°F

Catalog #	Black Epoxy	Qty	
M129C	Course/glass filled	5 Lbs.	
M129C-4	Course/glass filled	20 Lbs.(4/case)	
M129C-25	Course/glass filled	25 Lbs	
M129	Fine/glass filled	5 Lbs	
M129-4	Fine/glass filled	20 Lbs.(4/case)	
M129-25	Fine/glass filled	25 Lbs	

40 LBS. =5%

100 LBS. = 10%

200 LBS. = 15%

COLD MOUNTING SYSTEMS

METLAB EPOXY

is a low viscosity, two component clear casting resin. METLAB gels rapidly at room temperature and cures to a clear tough chemical resistant compound. It has excellent adhesion to most substrates as well as a good electrical insulator. Uses include encapsulating, potting metallographic or similar specimens, and potting as electronic devices. Mix 15 parts (by volume) of METLAB resin with 2 parts (by volume) of METLAB hardener. A 100 gram mass will gel in 20 min. at 23 degrees C. Cure time will depend on temperature and mass of the resin. 4-8 hours at room temperature is usually sufficient. Can be used with vacuum impregnation. Shore D hardness of 82



Catalog #	Metlab Epoxy	Qty	
M135	1 Quart Resin, 1/2 Pint Hardener (10) 7 oz. waxed cups (10) stir sticks	KIT	
M136	Resin	QUART	
M137	Resin	GALLON	
M138	Hardener	½ PINT	
M139	Hardener	QUART	

JETSET EPOXY

is a low viscosity, two component clear casting resin. JETSET gels rapidly at room temperature and cures to a clear tough chemical resistant compound. It has excellent adhesion to most substrates as well as a good electrical insulator. Uses include encapsulating, potting metallographic or similar specimens and potting as electronic devices. Mix 2 parts (by volume) of resin with 1 part (by volume) of hardener. Mix thoroughly. Entrapped air can be minimized by gentle yet thorough stirring. Air cure to full hardness in 30 min.



Catalog #	Jetset Epoxy	Qty	
M135A	1 Quart Resin, 1/2 Pint Hardener (10) 7 oz. waxed cups (10) stir sticks	KIT	
M136A	Resin	QUART	
M137A	Resin	GALLON	
M138A	Hardener	PINT	
M139A	Hardener	1/2 GAL	

TECHNOVIT 4000 (POLYESTER)

is a fast polymerising cold curing three-component resin based on modified polyester supplied as powder, syrup I and syrup II. It is suitable for gap-free embedding of specimen that are difficult to embed because of their shape or coating, that cannot be exposed to high temperature or pressure which requires fast and accurate testing and for which the embedding material must be abrasion-resistant. Color is white mixing ratio is 2:2:1 processing time is 4 min. curing time at 22 degrees C is 7 min.



Catalog #	Technovit 4000	Qty	
TN4000	750 g powder, 500 ml syrup I, 250 ml syrup II	KIT	

COLD MOUNTING SYSTEMS

POLYESTER

is a clear, two component room temperature curing casting resin. Mix 1 gram of catalyst cat # M149 with each 60 grams of Polyester cat # M148 (in ounces it is 0.01 oz. Of catalyst to 6 oz. of resin) stir thoroughly to ensure proper mixing. Blend slowly to avoid trapping bubbles. Mix for 1 min. the resin will turn a slight greenish color upon mixing. This color will disappear when the resin cures. Cure time varies with mass and temperature. Smaller masses and lower temperatures result in longer cure times. For 100g mass at 72 degrees F gel time is approx. 1 hour. Parts can usually be demolded after 1-1/2 - 2 hours. Ultimate properties are obtained after 8-10 hours. Cure time may be shortened by using mild heat. Shore D hardness of 76



Catalog #	Polyester Kit	Qty	
M147	1 Quart Resin, Unit Hardener (10) 7 oz. waxed cups (10) stir sticks	KIT	

FAST CURE ACRYLIC

is fast curing translucent two component acrylic casting system. Specimens may usually be removed after 5-10 min. at room temperature. Fast cure acrylic is characterized by an unusually high standard of adhesion for this type of system. It also exhibits relatively low shrinkage and good flow characteristics. Mix 2 parts (by volume) of Fast cure acrylic powder with 1 part (by volume of Fast cure acrylic liquid. Stir thoroughly for 15-20 sec. And use immediately. Material will cure in 5-10 min. at room temperature. Shore D hardness 80.



Catalog #	Fast Cure Acrylic	Qty	
M140	1 Lb. Powder, 1 Pint Liquid (10) 7 oz. waxed cups (10) stir sticks	KIT	
M142	Powder	5 LBS.	
M143	Powder	10 LBS	
M145	Liquid	½ GAL	
M146	Liquid	GALLON	

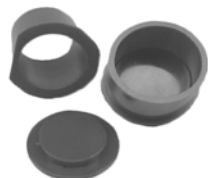
GLASS FILLED CURING ACRYLIC

Same as our Fast Cure Acrylic but exhibits a higher hardness with excellent edge retention with minimal shrinkage. Shore D Hardness 95. Color is opaque black



Catalog #	Glass Filled Curing Acrylic	Qty	
M140G	1 Lb. Powder, 1 Pint Liquid (10) 7 oz. waxed cups (10) stir sticks	KIT	
M142G	Powder	5 LBS.	
M143G	Powder	10 LBS	
M145G	Liquid	½ GAL	
M146G	Liquid	GALLON	

MOUNTING SUPPLIES



Catalog #	Reusable Plastic Molds	Qty	
M154	1.0" I.D.	12/PKG.	
M155	1.25" I.D.	12/PKG.	
M156	1.50" I.D.	12/PKG.	



Catalog #	Specimen Caps	Qty	
M171	1.0" I.D.	25/PKG.	
M172	1.25" I.D.	25/PKG.	
M173	1.50" I.D.	25/PKG.	
M173-2	2" I.D.	25/PKG.	



Catalog #	Mounting Clips	Qty	
M163	Met-clips (metal)	100/PKG.	
M164	Met-clips (plastic)	100/PKG.	
M174	Uniclips (black plastic)	100/PKG.	



Catalog #	Met Base 4"x 5" P.S.A.	Qty	
M180	Met Base	10/PKG.	



Catalog #	Silicon Rubber Molds	Qty	
M157	1.0" I.D.	10/PKG.	
M158	1.25" I.D.	10/PKG.	
M159	1.50" I.D.	10/PKG.	
RM2	2.0" I.D.	5/PKG.	
RM2A	2.25" X 1"	5/PKG.	
RM3	3.0" I.D.	EACH	
RM3A	3.0" X 2.0"	EACH	
RM5	5.0" I.D.	EACH	
RM5A	5.0" X 1.25"	EACH	



Catalog #	Spray cans	Qty	
M167	Silicone lubricant	12 oz.	
M168	Fluorocarbon dry lubricant	9.5 oz.	
M169	Solvent cleaner/degreaser	16 oz.	
M170	Plastic spray	10.5 oz.	



Catalog #	Cups / Sticks	Qty	
M165	Waxed Paper Cups (7 oz.)	100/PKG.	
M165A	Plastic Cups (4 oz.)	50/PKG.	
M166	Wooden Spatulas	500/PKG.	