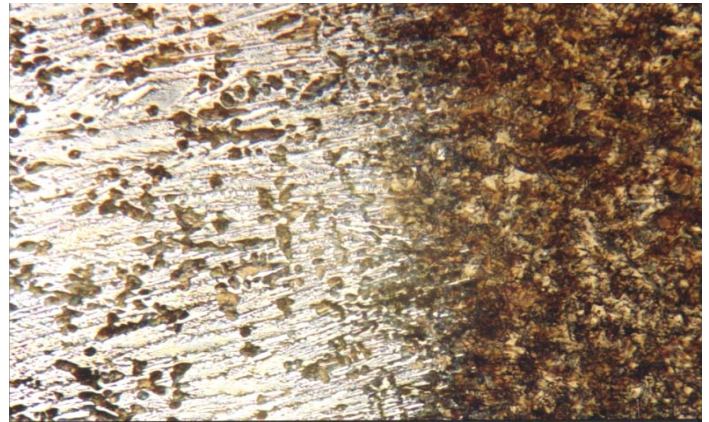


Material : Chilled Cast Iron

Method No. : B06

Results

Chilled zone has a lighter colour and the remaining darker area is gray iron.



Chilled Cast Iron, Brightfield
Magnification: 300X Etching: 3% Nital

Preparation Method:

Cutting: Abrasive Cut-off machine with Metlab RC-30-50 Abrasive wheel

Mounting: Mounting Press with Phenolic Powder

Mechanical Preparation: FORCIPOL Grinding / Polishing Machine + FORCIMAT Automatic Specimen Mover.

| Steps | Surface | Abrasive | Lubricant | Force per Sample, (N)/(PSI) | Time min. | Disc Speed, rpm | Relative Rotation |
|-------|----------------|----------------------------|-----------|-----------------------------|-----------------------|-----------------|-------------------|
| 1 | S/C Paper Disc | 180 Grit | Water | 25/5 | 2 min. or until plane | 300 | Contra |
| 2 | S/C Paper Disc | 400 Grit | Water | 25/5 | 2 | 300 | Contra |
| 3 | S/C Paper Disc | 800 Grit | Water | 25/5 | 2 | 300 | Contra |
| 4 | S/C Paper Disc | 1200 Grit | Water | 20/4 | 2 | 250 | Contra |
| 5 | Vellap Cloth | 1 μ Alumina Suspension | Blue Lube | 20/4 | 3 | 150 | Contra |

FOR MORE DETAILED INFORMATION PLEASE REFER TO METLAB PRICE LIST