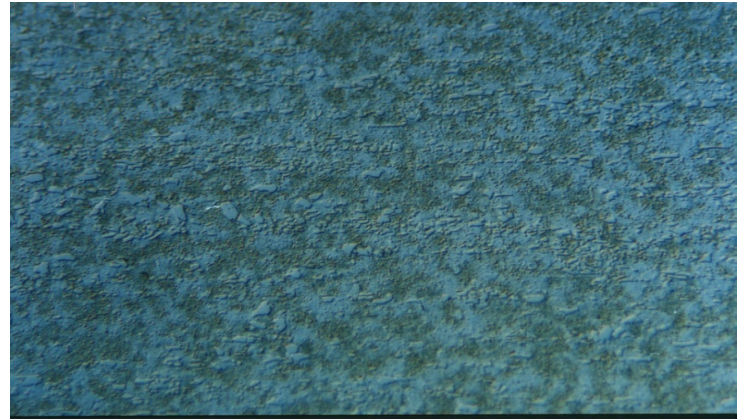


**Material** : AISI M2 High Speed Tool Steel

**Method No.** : A11

## Results

The microstructure of this high alloy steel consists of alloy carbides in martensitic matrix. Differential interference contrast makes the primary carbides visible.



**AISI M2 High Speed Tool Steel**  
Magnification: 180X

Etching: Picral  
10%

## Preparation Method:

**Cutting:** Abrasive Cut-off machine with Metlab RC-50+ Abrasive wheel

**Mounting:** Mounting Press with Diallyl Phthalate

**Mechanical Preparation:** FORCIPOL Grinding / Polishing Machine + FORCIMAT Automatic Specimen Mover.

Steps	Surface	Abrasive	Lubricant	Force per Sample, (N)/(PSI)	Time min.	Disc Speed, rpm	Relative Rotation
1	PIANO	YELLOW	Water	25/5	1	250	Contra
2	PIANO	BLUE	Water	25/5	1	300	Contra
3	Dac Cloth	3 $\mu$ Diamond Suspension	Blue Lube	15/3	4	150	Contra
4	Metlab Cloth	1 $\mu$ Diamond Suspension	Blue Lube	15/3	1	150	Contra

**FOR MORE DETAILED INFORMATION PLEASE REFER TO METLAB PRICE LIST**