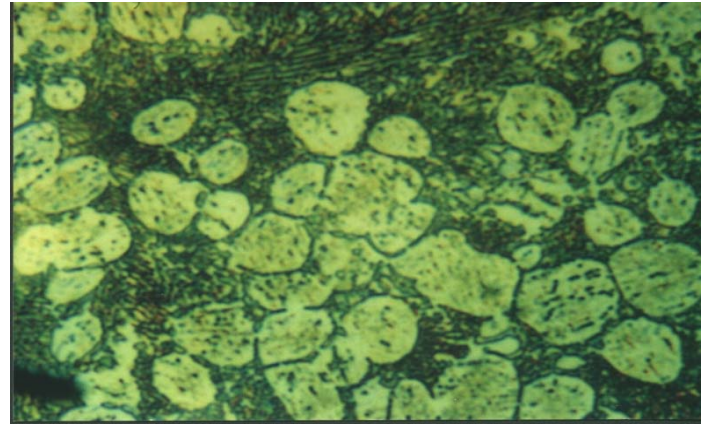


**Material** : Zn-5 Al- 1Cu (Zamak)

**Method No.** : E01

**Results**

The microstructure of this widely used alloy consist of eutectoid and zinc phase. Alloy is produced by diecasting.



**Zn-5 Al- 1Cu, DIC**

Etching: 5gr CrO<sub>3</sub> + 0,5 gr Na<sub>2</sub> SO<sub>4</sub> + 100ml H<sub>2</sub>O  
Magnification: 1260 X

**Preparation Method:**

**Cutting:** Abrasive Cut-off machine with Metlab Abrasive Wheels

**Mounting:** Mounting Press with Phenolic Powder

**Mechanical Preparation:** FORCIPOL Grinding / Polishing Machine + FORCIMAT Automatic Specimen Mover.

Steps	Surface	Abrasive	Lubricant	Force per Sample, (N)/(PSI)	Time min.	Disc Speed, rpm	Relative Rotation
1	PIANO	YELLOW	Water	25/5	1	250	Contra
2	PIANO	BLUE	Water	25/5	1	300	Contra
3	Dac Cloth	3μ Diamond Suspension	Blue Lube	15/3	4	150	Contra
4	Metlab Cloth	1μ Diamond Suspension	Blue Lube	15/3	1	150	Contra

**FOR MORE DETAILED INFORMATION PLEASE REFER TO METLAB PRICE LIST**